

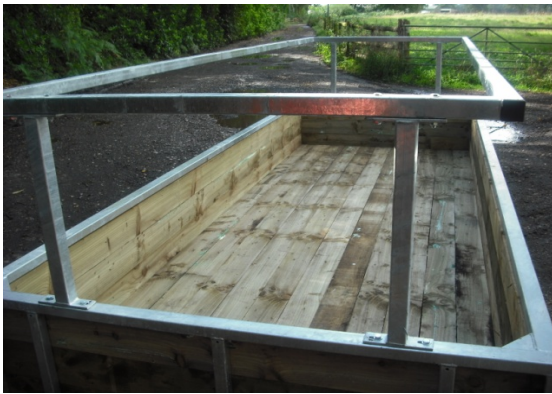


01625 861749
07714 324 847

Email: millwardkeeling2@aol.com
 Web: www.millwardandkeeling.co.uk

M&Ks NEW HEAVY DUTY FEED BUNKER

Now available with or without timber base - Both options have pallet fork lifting facility



Open top & sides allow for round or square bales
 Loose silage or diet feeder

New heavy duty 60 x 40 mm box section frame
 Fully galvanised lined with 6" x 1" treated boards



- 2 feed height options – 22" & 28"
- Single sided bunkers available
- 8 ft models available

- available with or without timber base
- Size: 15' x 6' (other sizes can be made to order)

22" for young stock 3 board deep	No base	£595
	Fully boarded	£725
28" for large cattle 4 board deep	No base	£695
	Fully boarded	£795
	8' x 6' Fully boarded	£565
	No base	£498
	15' x 3' Fully boarded	£595
	10' x 6' Fully boarded	£625
	No base	£515

+VAT – fuel surcharge may apply