

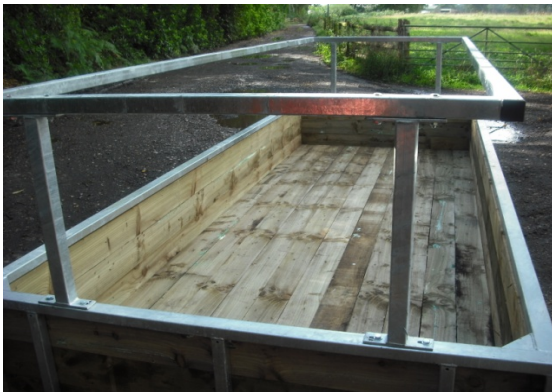


**01625 861749**  
**07714 324 847**

Email: [millwardkeeling2@aol.com](mailto:millwardkeeling2@aol.com)  
 Web: [www.millwardandkeeling.co.uk](http://www.millwardandkeeling.co.uk)

**M&Ks NEW HEAVY DUTY FEED BUNKER**

Now available with or without timber base - Both options have pallet fork lifting facility



Open top & sides allow for round or square bales  
 Loose silage or diet feeder

New heavy duty 60 x 40 mm box section frame  
 Fully galvanised lined with 6" x 1" treated boards



- 2 feed height options – 22" & 28"
- Single sided bunkers available
- 8 ft models available

- available with or without timber base
- Size: 15' x 6' (other sizes can be made to order)

22" for young stock 3 board deep	No base	£620
	Fully boarded	£750
28" for large cattle 4 board deep	No base	£725
	Fully boarded	£850
	8' x 6' Fully boarded	£600
	No base	£540
	15' x 3' Fully boarded	£595
	10' x 6' Fully boarded	£670
	No base	£550

+VAT – fuel surcharge may apply